

Expect more from your teeth

Solutions for a secure and confident smile



We have some good news for you

Your days of dealing with loose or ill-fitting dentures are nearly over. Soon you won't have to experience discomfort when eating certain foods. Best of all, you will no longer feel uncomfortable socializing with friends and family, wondering if, or when, your denture's looseness will be noticed by others.

Your dentist has a solution for you

There are modern dental solutions that will help you smile, eat, and socialize easily with confidence and without discomfort. In fact, it's easier than ever before to replace or secure your current dentures with a stable, comfortable, and esthetically pleasing solution.

Your teeth are very important

Losing your natural teeth was probably a traumatic experience. But living with an unreliable and unstable restoration will continue to produce negative effects.

Functionally, a secure, or "fixed," set of teeth lets you enjoy your favorite foods. When wearing ill-fitting dentures, enjoying a meal can become difficult and uncomfortable.

A natural-looking smile is often seen as a symbol of health and beauty. Equally important, smiling provides positive emotional and psychological benefits.

Ultimately, a strong, stable, functioning dental restoration allows you to feel confident while helping you maintain health and well-being.



Did you know?

178,000,000*
people in North America
are missing teeth

Over half the adult population in North America is missing one or more teeth. The reasons why are numerous and include accident, illness and insufficient care.

* According to the American College of Prosthodontists (ACP)

Consequences of loose or ill-fitting dentures

Discomfort and inconvenience

Like many denture wearers you're probably unhappy with the fit or comfort of your current dentures.

Ill-fitting dentures can move in your mouth while you eat and speak, creating pressure on your gums and underlying jawbone.

This pressure can lead to painful inflammation and accelerate the changes to your appearance.



Difficulties chewing and speaking

Dentures often make it difficult to chew, which can cause you to stop eating many of the foods you enjoy, or those vital for your nutrition and health.

Additionally, the plastic palate of your current dentures can negatively affect the taste and texture of food.

Your dentures may also impact your ability to pronounce words, leading to uncomfortable conversations with family, friends, and acquaintances.

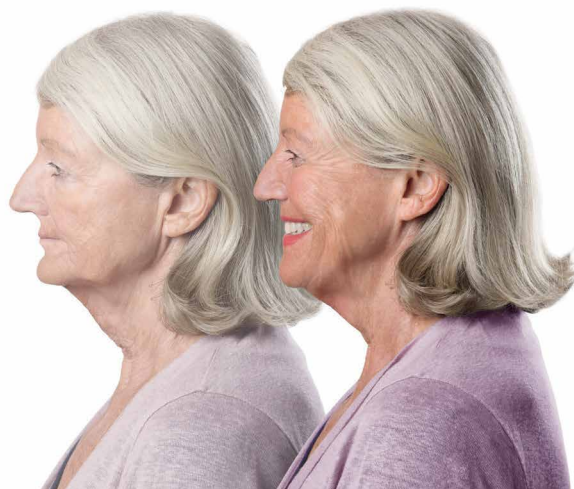
Changes to your appearance

When your jawbone is no longer stimulated by your own teeth and tooth roots, it will start shrinking.

This shrinking also negatively affects how your dentures fit, leading to repeated visits to your dentist for refitting.

Missing teeth can further affect your appearance, because your lips are no longer supported from the inside. Your chin starts to move forward and upward and your lips turn inward.

Thankfully solutions exist to prevent and actually reverse these changes.



A solution that's right for you

Modern solutions supported by dental implants are the best option for securing loose or ill-fitting dentures.

Depending on your specific situation, as few as two dental implants can make a big difference in securing your denture, giving you new confidence.

Dental implants, which are placed during a surgical procedure, provide the much-needed stability in your jawbone that has been absent after years of wearing uncomfortable dentures.

Removable versus fixed

The biggest decision you and your dentist must make is determining which type of solution is best for you.

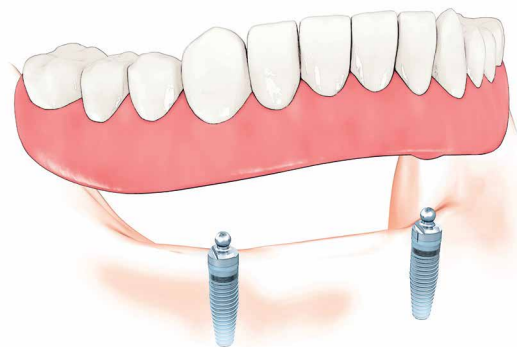
Options exist that allow you to remove your restoration for cleaning or have it permanently fixed in your mouth.

Sometimes this is a matter of convenience. Sometimes a fixed solution is the only choice due to clinical necessity.

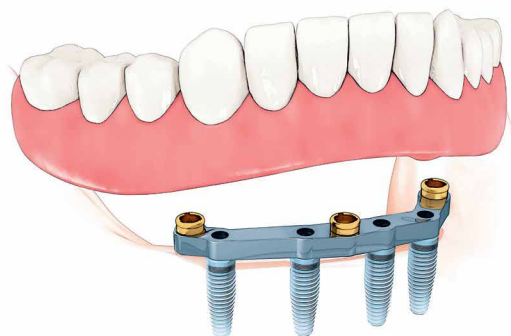
New teeth from day one

Receiving dental implants doesn't mean you will go around without teeth after surgery.

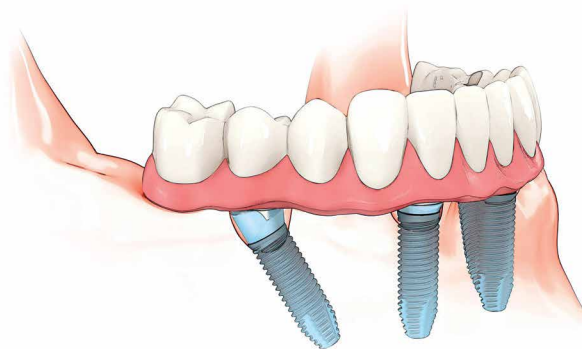
In most cases, your dentist will instruct you to use your existing dentures while the implants are healing and your new restoration is being created.



Fixed-removable restoration on two implants



Fixed-removable restoration on four implants and a bridge



Fixed restoration on four implants, the All-on-4[®] treatment concept

What are dental implants?

Modern dental implants are small titanium screws that replace and function like natural tooth roots. Dental implants are gently placed during a surgical procedure. Once in place, they allow your dentist to mount replacement teeth onto them.

And because they are made of material that is not harmful or toxic to living tissue, your body will easily accept them.

Dental implants are widely considered to be the most successful method of tooth replacement used today, benefiting patients in a number of ways.

Dental implants offer you many advantages

A healthy natural-looking smile

Modern dental restorations supported by dental implants look and feel like your natural teeth.

Restored appearance

One of the immediate benefits of dental implant therapy is that your lips now receive the support they were missing, which gives you a restored facial appearance.

Renewed eating and speaking

With the stability provided by dental implants, eating and speaking are often improved. And foods that were once difficult to eat can be put back on the menu.

Stable and comfortable fit

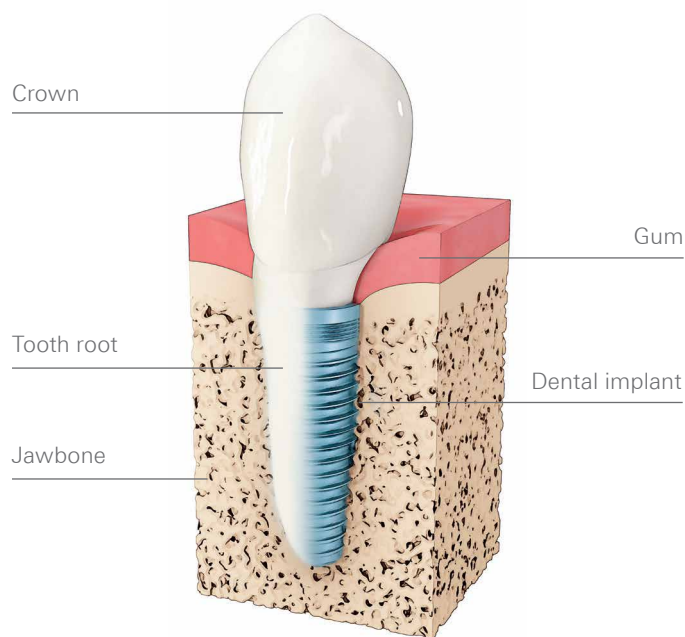
Dental implants are fixed in your jawbone, providing more stability and comfort. This is true for both removable and fixed dental implant restorations.

A long-lasting and proven solution

Dental implant solutions are very durable and easy to maintain.

With proper care and good oral hygiene, your new dental implants and attached restoration will last many years—or even your entire lifetime.

In 1965 the first patient was treated with modern dental implants. Since then, dentists all over the world have successfully placed millions of implants.



A dental implant acts like your natural tooth root

Finally, remember you are not alone

It can be easy to think you're the only one suffering with loose or ill-fitting dentures, but there are thousands of people having the same problems.

But the best peace of mind is knowing that thousands have already improved their situation and self-confidence through the use of dental implants.

And now you can too!

	Conventional denture	Implant-based restoration
Longevity	5–10 yrs	Lifetime*
Retention	Adhesives	Snap-on or fixed
Ease of cleaning	Easy	Easy to more complicated
Treatment costs	Low initial cost, but repeated visits for refitting and remakes add significant cost over time	Higher initial cost, but low or no replacement costs over time

Conventional denture vs. an implant-supported restoration

* With proper care, dental implants can last a lifetime.





Your new smile is waiting for you here:

Why your doctor uses products from Nobel Biocare

- Over 65 years of clinical experience
- More than 18 million implants placed worldwide
- Products manufactured in USA and Sweden
- 4,400+ independent scientific publications with data on Nobel Biocare products and solutions
- Present in over 80 countries

Talk to your doctor about which Nobel Biocare products are best for you. Learn more at www.myimplant.in

Important safety information

Treatment with dental implants is a surgical procedure and requires prior evaluation by your dentist to make sure your dental and general health permits dental implant treatment. Placement of dental implants is done during a surgical procedure, which has associated general risk, including infection, possible damage to nerve tissue, and excessive bleeding during or after the surgery. Consult your clinician to find out if dental implants are the right option for you.

Disclaimer: This leaflet provides information on routine dental implant treatment. Treatment plans involving dental implants will be unique for each patient. Timing, cost and delivery of care will be customized to suit each patient's individual situation. Care providers have their own preferences for the way a particular course of treatment is delivered and may suggest alternatives or variations not included in this information. Some products may not be regulatory cleared/released for sale in all markets. For professional use only. Caution: Federal (United States) law restricts this device to sale by or on the order of a dentist. See Instructions for Use for full prescribing information, including indications, contraindications, warnings and precautions. Nobel Biocare, the Nobel Biocare logotype and all other trademarks are, if nothing else is stated or is evident from the context in a certain case, trademarks of Nobel Biocare.